

SURFACE MOUNT BLOCK (WIRE)

304/316 STAINLESS STEEL



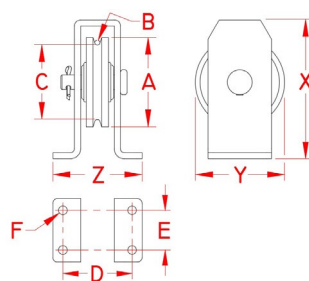
Import



Precision
Cast



Suncor
Exclusive



ITEM	A	B (wire size)	C	D	E	F (fastener)	X (height)	Y (length)	Z (width)	WLL (lb)	WT (lb)	SHEAVE	TYPE	PACKAGING TYPE	EACH (qty)	INNER (qty)	CARTON (qty)	UPC
S0422-0050-W	2.25"	3/32" + 1/8"	1.88"	1.75"	1.00"	3/16"	3.50"	2.25"	2.25"	1,000	0.97	S0412-0310	TYPE "A"	POLYBAG	1	1	50	791506044697
S0422-0075-W	3.25"	3/16"	2.75"	2.12"	1.50"	1/4"	5.00"	3.25"	2.75"	2,000	2.14	S0412-0513	TYPE "A"	POLYBAG	1	1	15	791506044710
S0422-0100-W	4.25"	1/4"	3.50"	2.40"	2.00"	3/8"	6.50"	4.25"	3.25"	3,000	4.18	S0412-0716	TYPE "A"	POLYBAG	1	1	5	791506044734

**NOTE: SHEAVE IS PRECISION CAST AND FITTED WITH BRONZE BUSH. REMOVABLE SHEAVE.
REFERENCE "FASTENER MATCHING CHART" FOR COMPATIBLE FASTENERS.
ALL DIMENSIONS ARE NOMINAL (+/- 3%) AND ARE SUBJECT TO CHANGE WITHOUT NOTICE.**